

IFB 2024.08.29LAK Lake Stevens Library Project

ADDENDUM # 5: Substitutions, Revisions to Drawings, Revisions to Specifications, and Questions and Answers (Part 3)

September 27, 2024

Substitution Requests:

[Full documentation of the substitution requests can be found at this link.](#)

07 54 00 – Mule Hide Products – PVC Roofing Membrane System (attached) is not approved.

09 51 00 – Fresch! Acoustics – FC-1 & FC-3 Baffle, Rectangle (attached) is not approved.

22 13 19 – Hollabaugh Brothers – Floor Drains Zurn Z415B & Z328 (attached) are approved alternate products so long as the following criteria are met:

- Strainer and pipe sizes to be as per schedule of equipment. Include trap primer tapping.

22 42 00 – Hollabaugh Brothers – Drinking Fountains -Haws 1001-1920HO (attached) is not approved.

22 42 00 – Hollabaugh Brothers – Kitchen Sink -Elkay (attached) is not approved.

22 42 00 – Hollabaugh Brothers – Wall Hydrants -Wade 8700 (attached) is not approved.

23 09 23 – Schneider Electric – DDC System Manufacturer – EcoStruxure (attached) is an approved alternate product so long as the following criteria are met:

- Subject to compliance with the specifications, bid documents and project's requirements

23 72 23 – Custom Mechanical Solutions – Packaged Energy Recovery Ventilators -Auragreen (attached) is not approved.

23 81 29 – Custom Mechanical Solutions – VRF Systems -Samsung (attached) is not approved.

23 82 39 – Custom Mechanical Solutions – Wall Unit Heaters -Brasch (attached) is not approved.

Revisions to the Specifications:

SNO-ISLE LIBRARIES

[Full documentation of the revised specifications can be found at this link.](#)

08 35 23 Sliding and Folding Glass Doors

- Information added to sections 2.3

08 43 13 Aluminum Framed Entrances and Storefronts

- Sections 2.6 through 2.8 revised for clarity, and glazing thicknesses added for each system

22 42 00 Plumbing Fixture

- Drinking fountain manufacturer updated in sections 2.2 to match plumbing fixture schedule

26 05 33 Raceway and Boxes

- Added conditions where MC Cable is allowed.
- Revised and added floorbox information.

26 31 00 Photovoltaic Solar System

- Removed alternate bid language. Full system shall be base bid.

Revisions to the Drawings:

[Full documentation on revised drawings can be found at this link.](#)

G001 General Information

- Sheet titles for A9501 and A951 updated in drawing index

A100 First Floor Plan

- Carpet transition line added
- References to casework add alternates removed; all casework is in base bid
- Door number updated to correspond to door number in spec section 087100.

A101 Second Floor Plan

- Door numbers updated to correspond to door numbers in spec section 087100.

A102 Roof Plan

- References to solar panel add alternate removed; all solar panels are in base bid
- Solar inverter removed from roof; solar inverter is located in Electrical Room 111, refer to sheet E300.

A200 First Floor RCP

- One L7 fixture removed above service desk to match quantity in L series drawings. Exact locations of L7 fixtures to be determined prior to install.

A201 Second Floor RCP

- Revised note at openings in CLT panels.

SNO-ISLE LIBRARIES

A300 Building Elevations

- References to solar panel add alternate removed; all solar panels are in base bid

A301 Building Elevations

- References to solar panel add alternate removed; all solar panels are in base bid

A307 Steel Panel and Clerestory Elevations

- References to solar panel add alternate removed; all solar panels are in base bid

A310 Building Sections

- References to solar panel add alternate removed; all solar panels are in base bid

A311 Building Sections

- References to solar panel add alternate removed; all solar panels are in base bid

A452 Interior Glazing Schedule

- Glazing “type” removed from interior glazing schedules, as these were not applicable. See spec sections 084313 and 083523 for descriptions of each system.

A601 Interior Elevations

- Door number updated to correspond to door number in spec section 087100.
- Door numbers added

A900 Schedules

- Door schedule updated so that hardware group designations correspond to hardware group designations in spec section 087100.
- Some door numbers updated to correspond to door numbers in spec section 087100:
 - o I 03 changed to 103B
 - o I 09 changed to 202
 - o I 10 changed to 203
 - o I 11 changed to 204

A950 Casework Details

- “Add Alternate 2” removed from sheet title; all casework is in base bid

A951 Casework Details

- “Add Alternate 2” removed from sheet title; all casework is in base bid

E100 Legend

- Updated in response to bidder questions.

E101 Site Plan – Electrical

- Updated in response to bidder questions.

E300 First Floor Plan – Power

SNO-ISLE LIBRARIES

- Updated in response to bidder questions.

E500 One Line Diagram, Comm Riser Diagram

- Increased Main Distribution Panel to 800 amps due to added loads.

E701 Schedules

- Updated in response to bidder questions.
- Increased Main Distribution Panel to 800 amps due to added loads.

Procurement and Regulatory Process Questions:

- I am hoping to confirm the bid date of 10/10 at 2:00pm is correct for the above project and check if any addenda have been issued. Also, if there is a Planholders list as well. *[The bid date of 10/10 at 2:00 pm is correct. Attendees from the mandatory pre-bid conferences can be found in A.1 Addendum 2 at this link.](#)*
- Please provide expected NTP date and required construction duration. *[Sno-Isle Libraries expects the earliest practical project start date to be no earlier than Monday, October 28, 2024. The construction is expected to take 12 months, with an estimated substantial completion date of October 31, 2025. Alternate schedules will be considered. Final project start and completion dates will be established during contracting and memorialized in the contract documents.](#)*
- Could you please provide specifications for divisions 26, 27, 28, 31, 32, and 33? *[This comprehensive set contains volume 1, volume 2, and all appendices and associated documents.](#)*
- I am hoping to obtain the pre-bid meeting sign in sheet from 9/10 for the above project, if available. *[The pre-bid conference attendance information can be found in Addendum 2 – IFB No. 2024.08.29 LAK Lake Stevens Library Project.](#)*
- What is the anticipated start date for construction on this project? What is the anticipated duration? In the pre-bid mandatory, someone said that this project would be about 12 months. *[Sno-Isle Libraries expects the earliest practical project start date to be no earlier than Monday, October 28, 2024. The construction is expected to take 12 months, with an estimated substantial completion date of October 31, 2025. Alternate schedules will be considered. Final project start and completion dates will be established during contracting and memorialized in the contract documents.](#)*
- I cannot find the specs for earthwork, specifically Division 31, 32, 33. Can you please provide me with this information? *[This comprehensive set contains volume 1, volume 2, and all appendices and associated documents.](#)*

SNO-ISLE LIBRARIES

- Division 26, 27, 31, 32, and 33 are not included in Vol 2 of the manual. Will this be forthcoming?

[This comprehensive set contains volume 1, volume 2, and all appendices and associated documents.](#)

- The Sharps Disposal says TBD for a manufacturer. Do they know what they are wanting yet?

[1.5-Quart Sharps Secure Needle Disposal System, #50060](#)

Architecture:

- When referencing the Door Hardware Schedule in the Specs vs. the Door Schedule Drawing Set, multiple discrepancies were noticed.

Some of these include:

- Door 100B: Specs state 'HW Set 2', Door Schedule States HW Set 1'
- Doors 104, 205A: Specs state 'HW Set 6', Door Schedule states 'HW Set 7'
- Door 105: Spec states 'HW Set 7', Door Schedule states 'HW Set 4'
- Specs list Door103B, but missing Door 103B on the Door Schedule

Please confirm the Hardware Sets in the Specs that should be used.

Document reference: 1/A900, Spec Section: 087100 'Hardware Sets'

[The door schedule on A900 has been updated to accurately reflect the hardware groups in spec section 087100. Four door numbers have also been updated on the floor plans to correspond to the specs and are clouded on sheets A100 and A101.](#)

- There is a note that says 4" Thermoplastic for parking stall striping. Please confirm the product requirement of Thermoplastic over traffic paint.

[All striping within the parking lot shall be 4" thermoplastic. Traffic paint to be used in the right of way to match existing street striping. This change will be reflected in the civil drawings in an addendum next week.](#)

- Sheet 76 of the drawing package is off skew so the sheet number and title are not visible. Can you please replace this sheet?

[Page 76 of the drawing package, or Sheet A420, appears to be downloading correctly when tested. Detail 1/A420 is of the angled entry glazing, so the detail itself looks angled. Please inform the Owner if this issue remains unresolved.](#)

- Do all drywall walls go to slab and second floor wood slab? Or do any sit on top of RAF?

[All GWB walls extend below RAF to slab/CLT.](#)

- There are (2) sets of lighting drawings. Which set takes precedence when they differ in design?

[The lighting drawings \(LD series\) should take precedence for lighting fixture quantities and fixture type. The electrical drawings \(E series\) should take precedence for circuitry and emergency lighting designation, and the architectural RCPs should take precedence for dimensioning.](#)

SNO-ISLE LIBRARIES

- Are the book stacks receptacles mounted in a floor box, surface mounted to the stack somewhere, or integrated in each stack like the lighting? If they are integrated, are they provided and installed by others?
Refer to revised sheet E100 for symbol added to legend and revised Section 26 05 33 for floorboxes.
- Is the Audio-Visual scope rough-in only? There are AV components on the drawings, but no specs.
Refer to Sheet Notes 5,6,7&8 on Sheets E400 & E401.
- Sheet note 2 on E101 indicates that utility lines along 99th Ave NE shall be relocated to underground. There is work shown at the bottom of the drawing indicating where the new and existing utility poles are, and where an existing pole is to be removed. Who is responsible for transitioning overhead power to underground?
Refer to revised Sheet E101 for conduit risers at poles.
- Who is responsible for removing the (1) existing utility pole?
Pole shall be removed by contractor after utilities have removed overhead lines.
- Are the locations provided for the utility poles on E101 their actual location? C1.00 appears to be the only civil drawing showing the entirety of the OH electrical lines but does not address any changes or modifications,
New poles will be installed by Snohomish County PUD (SnoPUD) near the south and north property lines. Locations to be determined by SnoPUD. Refer to revised Sheet E101 for bidding instructions relative to pole locations.
- Detail 2 on E101 indicates (2) new utility poles, but the drawing states that the North of Site pole is existing. Which is correct?
Poles will be new. Refer to revised sheet E101 for correction.
- There are no specs indicating vault sizes, and nothing on the site plan indicating what size vault to provide and install for comcast, century link, and SNOPUD. Please provide vault sizes.
Refer to revised sheet E101 for vault sizes.
- There is an irrigation controller shown on the landscape drawings, but nothing mentioned on the power plans. Please provide direction or detail.
Refer to revised sheet E300 for power requirements.
- Vehicle chargers do not have a panel HR labeled and are not shown on any of the panel schedules. Please indicate which panel they are fed from.
Refer to revised Sheet E101 for EV homeruns and revised sheet E701 for updated panel schedules.

SNO-ISLE LIBRARIES

- Attachment I states that charging stations are to be Level 2, dual port, pedestal mounted. Division 26 27 26 – 2.7 states single port, level 2, with a MFG series general part number. Please advise which charger to provide, dual or single port.
Single port as per 26 27 26.
- Is electrical grounding spec section 26 05 26 – E relevant to this project?
Yes. Grounding shall be provided per specification and National Electrical Code requirements.
- We will be providing a bid for this spec section (27 51 13), however I see the other AV infrastructure in the building is omitted from the specs and is called out as “rough in only”.
AV equipment is not in this project scope. It will be contracted separately by the Owner.
- [Sheet S102 Roof Framing Plan](#) shows no CLT Deck that goes below the skylight/clerestory. Sheet A201 Level 2 RCP, Details 2 and 5 on Sheet A434, and Detail 2 on sheet A310 Buildings Section show a CLT deck under the clerestory. Does the space below the clerestory get a CLT Deck?
Yes, the CLT deck continues under the clerestory. See CLT diagram on 1/A403.
- [Sheet A201](#) has a note, “Void Forms to be Concrete Routed From Panels” for the void forms in the panels below the clerestory. Please provide more information about that note. If CLT panels go into clerestory place, why would they have to be concrete routed? Do concrete panels go into the clerestory space?
This note is an error and is corrected in this addendum. Also see note on A403.
- The [Details on sheet S301](#) shows the L2 CLT Deck going through the concrete shearwall. [Detail 2 on the sheet A310](#) shows the shearwall without the CLT deck running through it. In our experience, nothing runs through a concrete shearwall. Please confirm that the CLT deck does not go through the concrete shearwall.
Confirmed that the CLT deck does not run through the concrete shearwalls. The details on sheet S301 are shear wall elevations rather than sections.
- Does the 3-ply CLT support under the stair landing go to the subfloor?
Yes, see 1/S201 and 10/S604.
- Will the RAF take any load from the glass wall on top of the RAF? Meeting Room # 103, Column Line 2.
Yes.
- Document Reference: A100, 2/A601, 9/A720
The Meeting Room #103 glass partition on Grid Line 2 has a base that sits on top of the Raise Access Floor.

SNO-ISLE LIBRARIES

Please confirm detail 1/A720 only applies to the folding/sliding glass partition. Please confirm all other glazing at Meeting Room #103 does not have a framed partition supporting it from below.

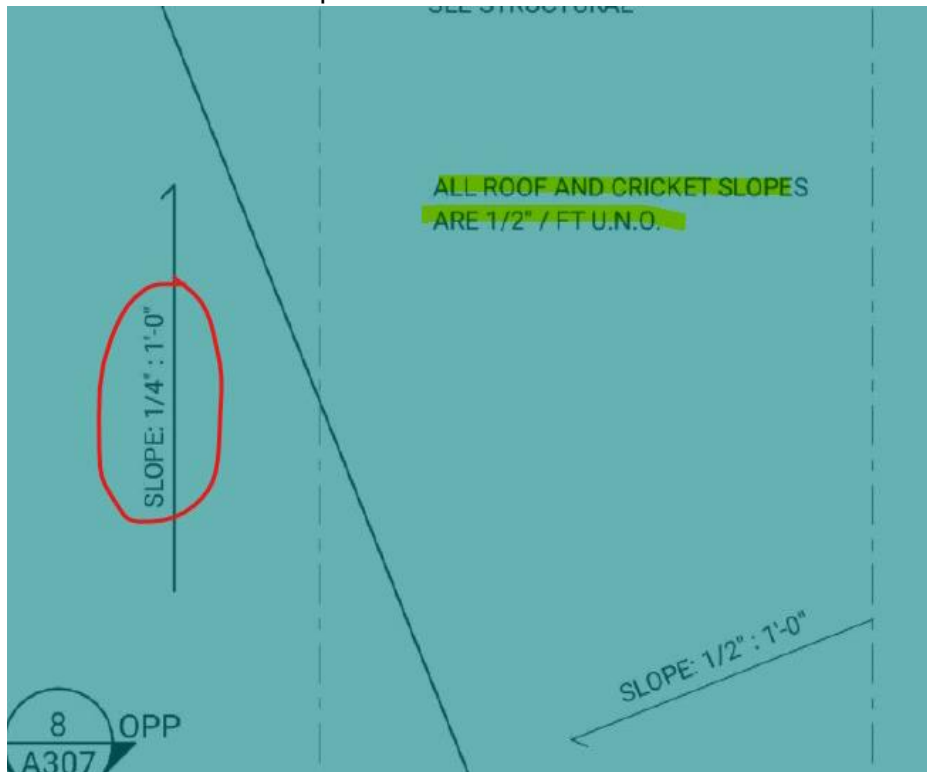
Confirmed that at Meeting Room 103, only the glazing on grid line E (detail 1/A720) has a framed partition below. The glazing on grid line 2 has a sheet metal plenum divider below the RAF. See details on sheet A720.

Note that the glazing at Room 205 also has a framed partition below the RAF.

- I still have not received the earthwork specs, specifically Division 31, 32, 33. Are there civil cad drawings available?

A compiled project manual file has been added to the project sharepoint, to address confusions regarding how the project manual files were previously divided. See file titled 2024.08.28 Lake Stevens Library Final Bid Set.

- Plan shows 0.5/12" slope for ALL ROOF and in the same time 0.25/12" at main slope:



- Is main slope done with frame or rigid tapered foam has to be used?
It is correct that all roof/cricket slopes are 1/2" per foot except at the center section where noted, which is 1/4" per foot.
- Are crickets part of frame or has to be built with tapered foam over the frame?
CLT roof structure is flat. All roof slopes and crickets are to be constructed of tapered insulation.

SNO-ISLE LIBRARIES



- Corner Guards: Stainless steel corner guards and Wainscot panels specified in Section 10 26 05 not shown in plans. Please confirm location of corner guards and panels.

Provide ten (10) 4' high stainless steel corner guards, locations to be confirmed in submittals.

FRP panels are in rooms 112 and 210 – see notes in Finish Schedule on sheet A900.

- END OF ADDENDUM -